

Steam engines were used for many things, not just pumping sewage.

Can you find a model of the Flying Scotsman? What is it?

Historic names for the toilet include: John, Crapper, Loo, Little boys Room, Water Closet (W.C.), Thunderbox, Privy, Lavatory



Can you find the Portsmouth coat of arms? Clue: Look at the top of a staircase.



Thomas Crapper, 1836-1910 improved and promoted the 'Water Waste Preventer' (the syphon fitted in British toilet cisterns). He promoted plumbed-in bathroom fittings and brought them 'out of the closet'.

Wordsearch

W	E	A	S	T	N	E	Y
P	C	U	S	T	E	A	M
P	I	R	W	Y	O	P	G
U	O	G	A	A	P	I	S
M	R	W	C	N	T	S	P
P	E	K	E	S	K	T	M
G	O	V	E	R	N	O	R
S	E	W	A	G	E	N	T
B	E	A	M	Y	R	T	S

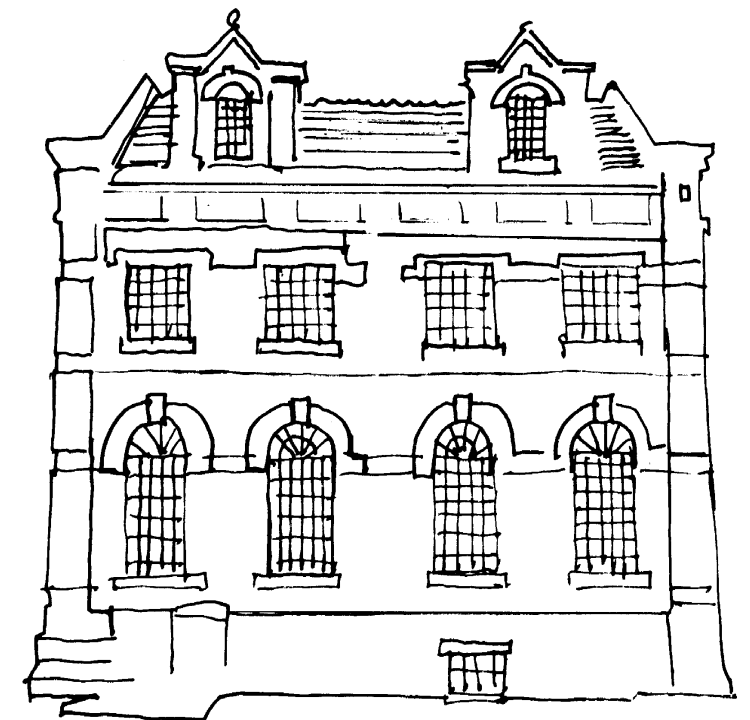
Governor	Steam	Beam
Piston	Power	Pump
Sewage	Crank	Watt
Eastney		

Eastney Beam Engine House
Henderson Road, Portsmouth

Museums and Records Service
Museum Road
Portsmouth
PO1 2LJ
Tel. 023 9282 7261
Email: mvs@portsmouthcc.gov.uk
www.portsmouthmuseums.co.uk



An Exciting Past to Explore at Eastney Beam Engine House

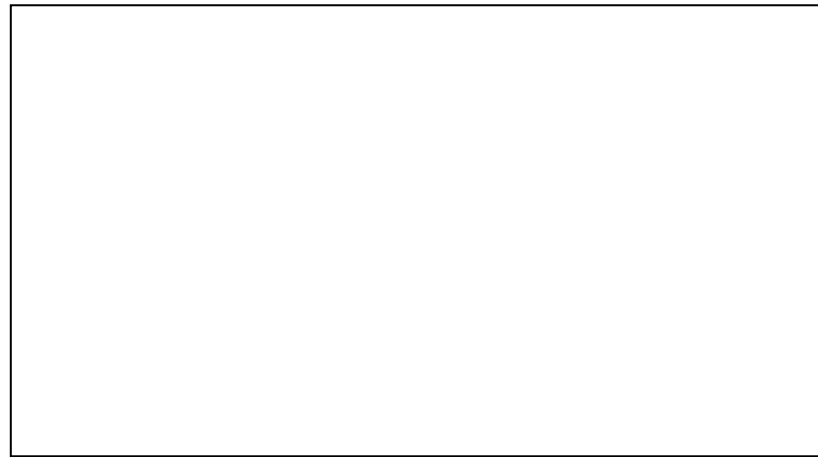


Family Trail

What was the engine used to pump?

If you put your nose to the floor you might be able to smell it...

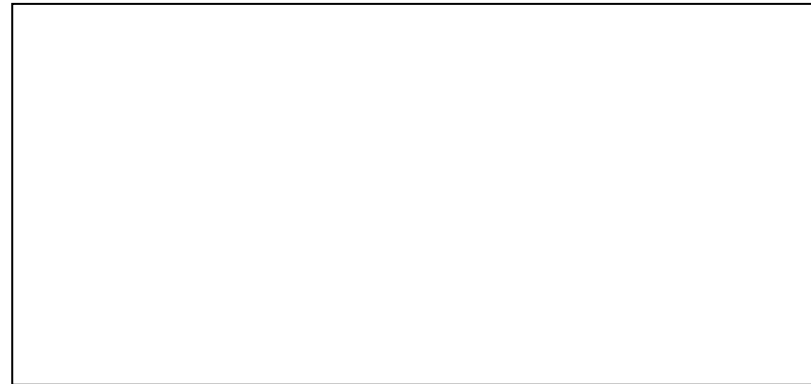
What kinds of creatures would you find in the sewers? Why not draw one here.



In 1849 about 1,000 people in Portsmouth died of cholera. This was spread by the poo of infected people, if you look at this picture you can see how. Houses were not connected to sewers, waste was collected up in open ditches.

Look for the beam. It is made of metal, and is shaped like a banana that has been straightened out. The beam is powered by steam and operated a pump, which pumped sewage from Portsmouth out to sea.

Use this box to draw the motion of the beam pushing down the cylinders.



Toilet paper was invented by Joseph Gayetty in 1857. His name was printed on every sheet.

What year were the engines put into the pumping station? You should be able to find a plaque if you are in the engine house.

Have a closer look at the engine and all of its parts. Why do you think it has little glass pots of oil fixed to it?

What do you think people used before toilet paper was invented? Some mad examples are moss, snow and sand (very scratchy!)

Can you find the Governor? This poem might help you.

*I can feel myself going faster and faster still
The faster I go, the more I need to slow down
How do I slow down? By sticking my arms out
of course!*

What do you think the Governor does? Ask a member of staff if you don't know the answer.

Sewage stayed in sewers until the tide was going the right way, so that it didn't all wash back into Portsmouth.

Can you find a photograph of two men in the Beam Engine House?

What are they wearing?

Which of these figures do they look most like?

What is different about the clothes that the Victorians wore and what we wear now?

